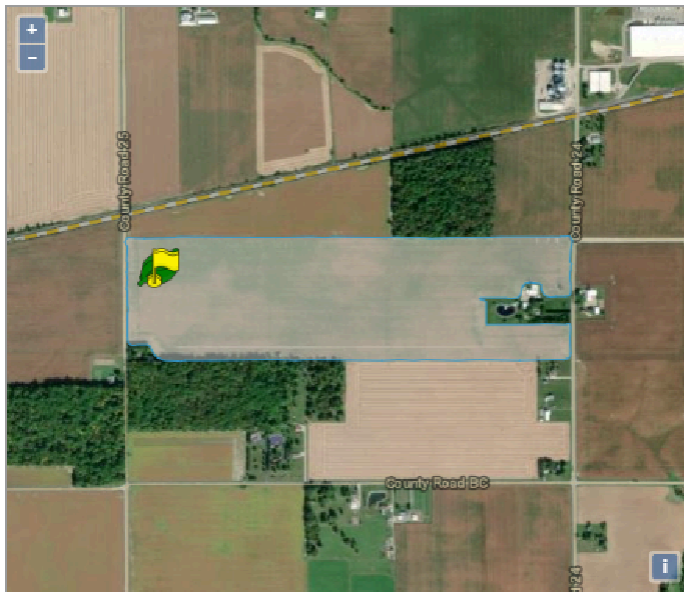


Product Trial Report

GROWER DETAILS	FIELD DETAILS	PLANTING/HARVEST DETAILS	Total Acre Final Report
Grower	Total Acres: 115.88	Crop: Corn	Report Date: 10/21/2024
City & State: Archbold, OH	Soil Type: Please see Soil Type Map	Plant Date: 05/22/2024	Harvest Year: 2024
Zip Code: 43502	Tile: Spot Tile	Row Spacing: 30"	Crop: Corn
	Irrigation: None	Planting Depth: 2.00	Trial Name: X246 Trial
	Fall Tillage: Conventional	Harvest Date: 09/27/2024	Trial Type: In-Furrow, V4, V10, VT
	Spring Tillage: Conventional	Hybrid: DKC56-26	Product: SB Armor17-K
	Previous Crop: Soybean	Seed Company: DeKalb	
		Population: 30100	

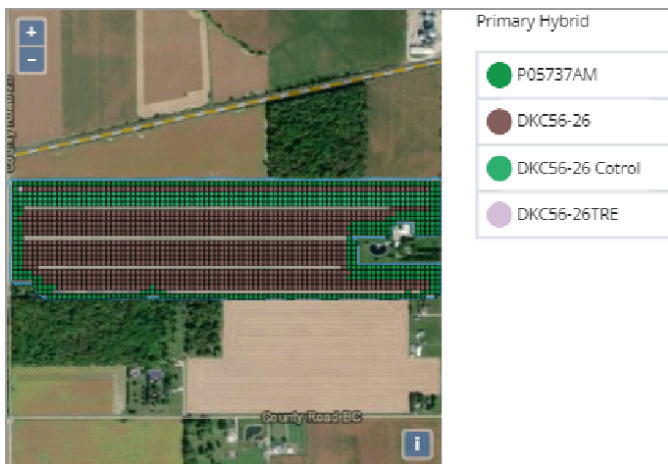
Field Map



Soil Type



Planting Map



Trial Zones



Product Trial Report

Flag Test Data

x246 applied

	Date	Time	Color	Count	Soil Temp.	GDUs	GDU delta
1	5/28/2024	07:30 PM	green	18	65 °F	121	
2	5/29/2024	08:00 AM	blue	7	60 °F	128	7
3	5/29/2024	07:43 PM	yellow	4	68 °F	133	12
4	5/30/2024	08:20 AM	red	1	58 °F	139	18

Primary

	Date	Time	Color	Count	Soil Temp.	GDUs	GDU delta
1	5/28/2024	07:30 PM	green	18	65 °F	121	
2	5/29/2024	08:00 AM	blue	6	60 °F	128	7
3	5/29/2024	07:40 PM	yellow	3	68 °F	133	12

Product Trial Report

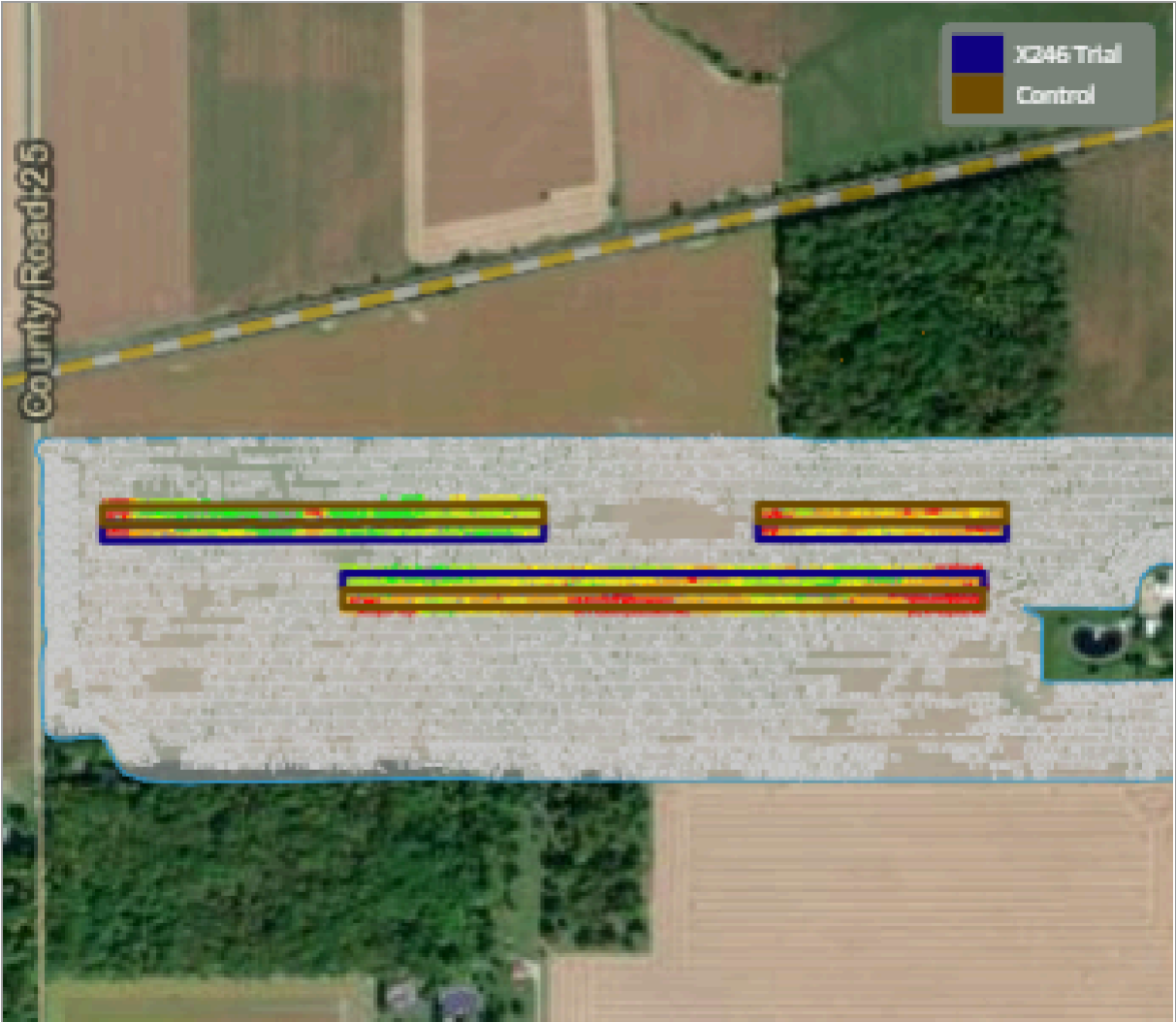
Tissue Results Data

Date	GDU	Water	Tissue Site	Nitrogen	Phosphorus	Potassium	Magnesium	Calcium	Sulfur	Zinc	Manganese	Copper	Iron	Boron	Aluminum	Molybdenum	Sodium
06/24/2024	678	-	X246	4.61 %	0.34 %	2.41 %	0.26 %	0.57 %	0.26 %	24.05 ppm	32.28 ppm	16.6 ppm	212.48 ppm	9.54 ppm		1.01 ppm	0.2 ppm
			Control	4.52 %	0.42 %	2.74 %	0.35 %	0.8 %	0.31 %	29.9 ppm	40.22 ppm	21.74 ppm	270.89 ppm	10.25 ppm		1.27 ppm	0.36 ppm
07/01/2024	818	2.6 in	X246	4.18 %	0.37 %	2.11 %	0.27 %	0.54 %	0.26 %	26.25 ppm	31 ppm	14.46 ppm	207.79 ppm	12.08 ppm		1.21 ppm	0.26 ppm
			Control	4.08 %	0.35 %	1.93 %	0.29 %	0.54 %	0.25 %	25.52 ppm	26.63 ppm	15.07 ppm	229.55 ppm	9.66 ppm		1.23 ppm	0.32 ppm
08/05/2024	1640	3.3 in	X246	2.73 %	0.29 %	2.17 %	0.17 %	0.6 %	0.19 %	22.26 ppm	25.05 ppm	10.39 ppm	235.56 ppm	11.55 ppm		1 ppm	0.37 ppm
			Control	2.82 %	0.32 %	2.25 %	0.18 %	0.6 %	0.21 %	26.42 ppm	28.1 ppm	11.01 ppm	146.33 ppm	11.17 ppm		1.09 ppm	0.31 ppm

Product Trial Report

Yield Results Data

High Level Yield Heat Map



This data was filtered based on $-1.5 / +1.5$ St Dev

Yield Summary BPA	
Location	Yield
X246 Trial	214.75
Control	204.96
Yield Response	9.79

Yield Values	
●	106.8 - 178.7
●	178.8 - 203.1
●	203.1 - 219.6
●	219.6 - 235.9
●	235.9 - 255.4

Product Trial Report

Product Trial Comments:

This trial has a +9.79 bu./acre yield response. This field experienced a projected 30% yield loss due to drought. Due to yield variation challenges from drought, the zones were trimmed to a set number of harvest passes as a means to get the fairest trial look possible. The original trial locations resulted in a +13.31 bu./acre yield response. The $-1.5/+1.5$ standard deviation measurement method was used to minimize yield variation.

The Flag Test study showed X246 achieved better emergence. X246 had 29 plants emerge within 133 GDU window compared to 27 for the control.

The control had 2 documented fungicide applications. Aproach Prima on June 26th and Miravis Neo on August 7th

Product Trial Report

Application Date and Details:

Application #1

Application Date: 5/22/24

Growth Stage: N/A

Application Method: In-Furrow

Product Application Rate/Acre (X246): 1 quart

Tank Mix Rate/Acre: 5 gallons

Application #2

Application Date: 6/12/24, 368 GDU's

Growth Stage: V4

Application Method: Foliar

Product Application Rate/Acre (X246): 2 quarts

Tank Mix Rate/Acre: 14.5 gallons

Application #3

Application Date: 6/28/24, 760 GDU's

Growth Stage: V10

Application Method: Foliar

Product Application Rate/Acre (X246): 2 quarts

Tank Mix Rate/Acre: 20 gallons

Application #4

Application Date: 8/7/24, 1682 GDU's

Growth Stage: R1

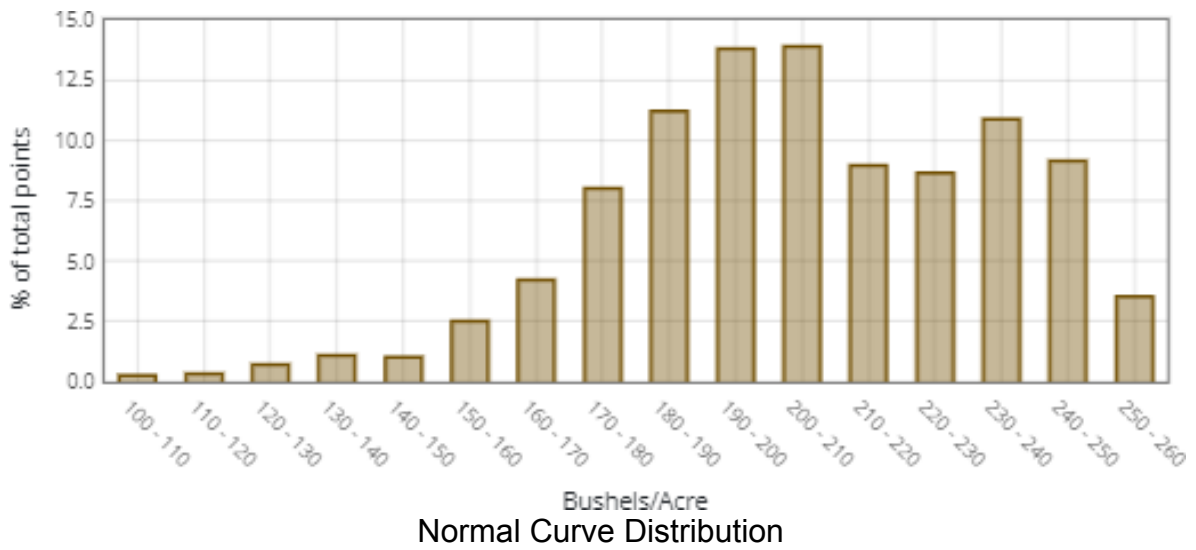
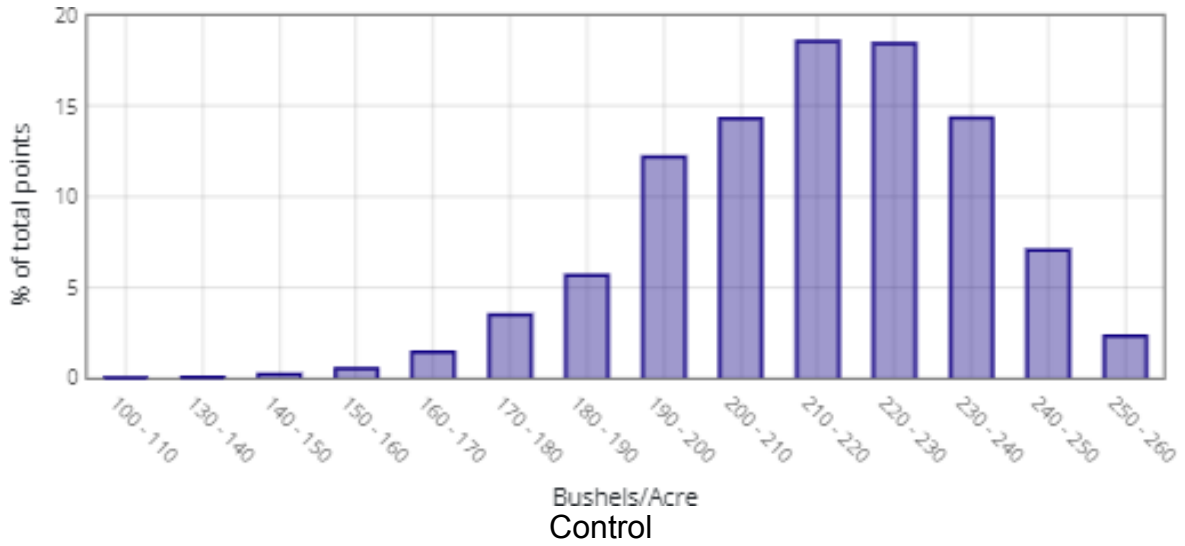
Application Method: Foliar

Product Application Rate/Acre (X246): 2 quarts

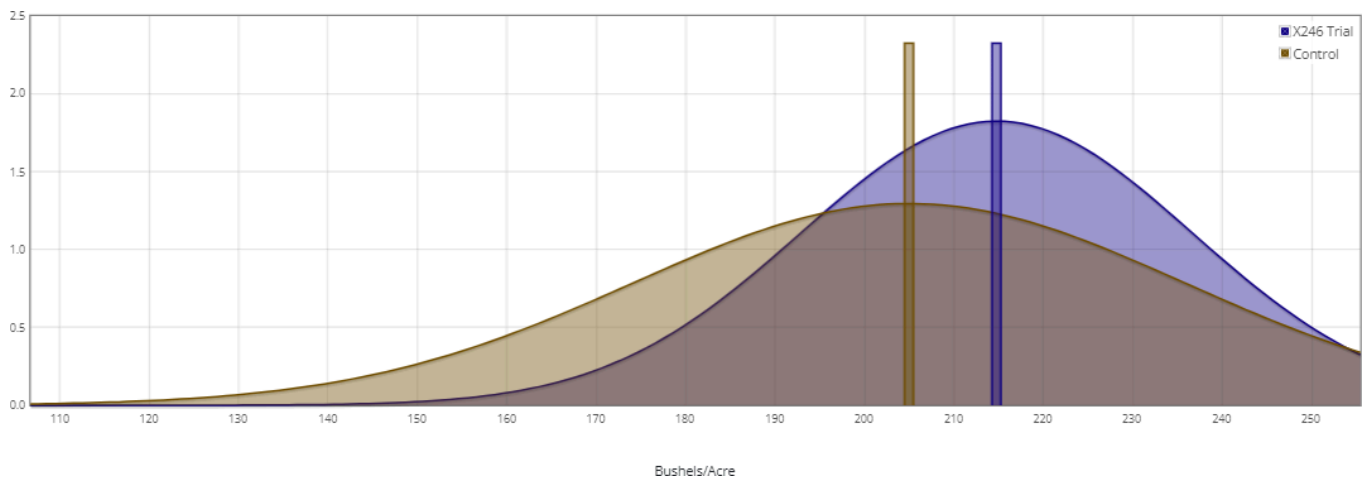
Tank Mix Rate/Acre: 20 gallons

Product Trial Report

X246 Trial



Normal Curve Distribution



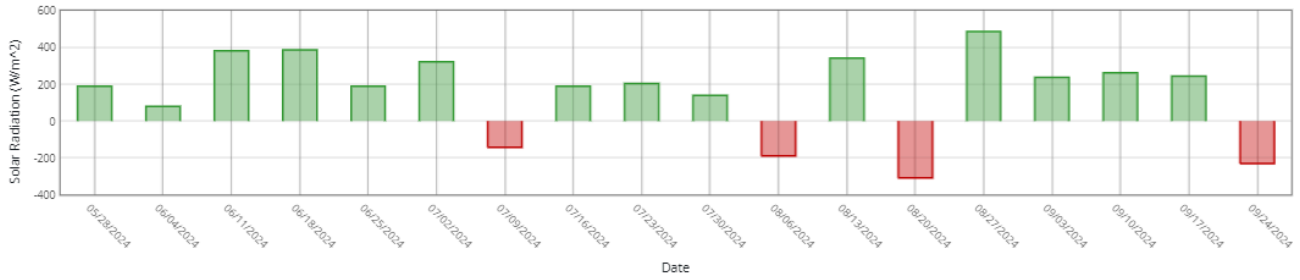
Product Trial Report

Trial Location Weather Data vs 5 Yr Avg

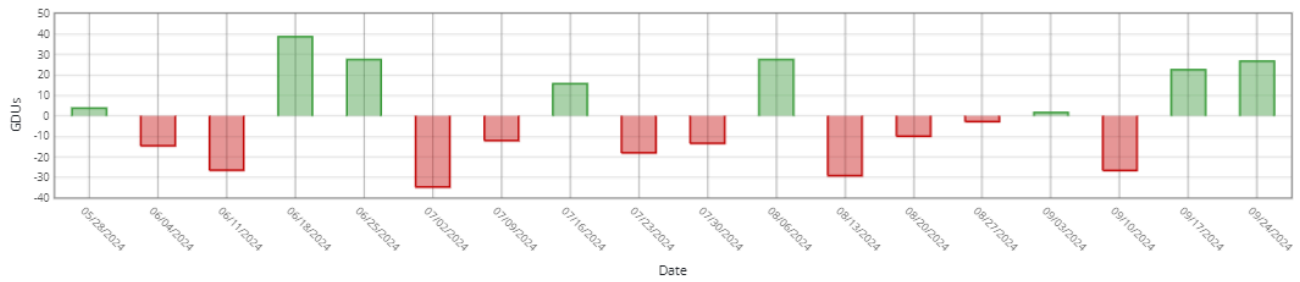
Historical Averages based on past years

Cumulative Week over Week

Sunlight



Heat (GDUs)



Rain

